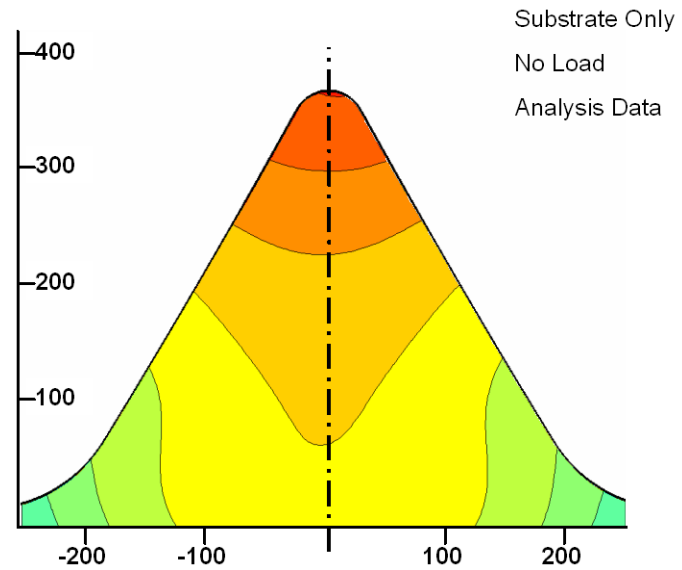
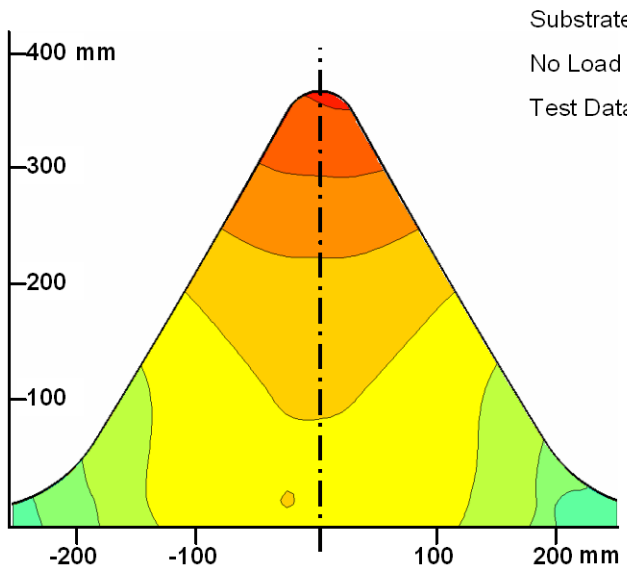
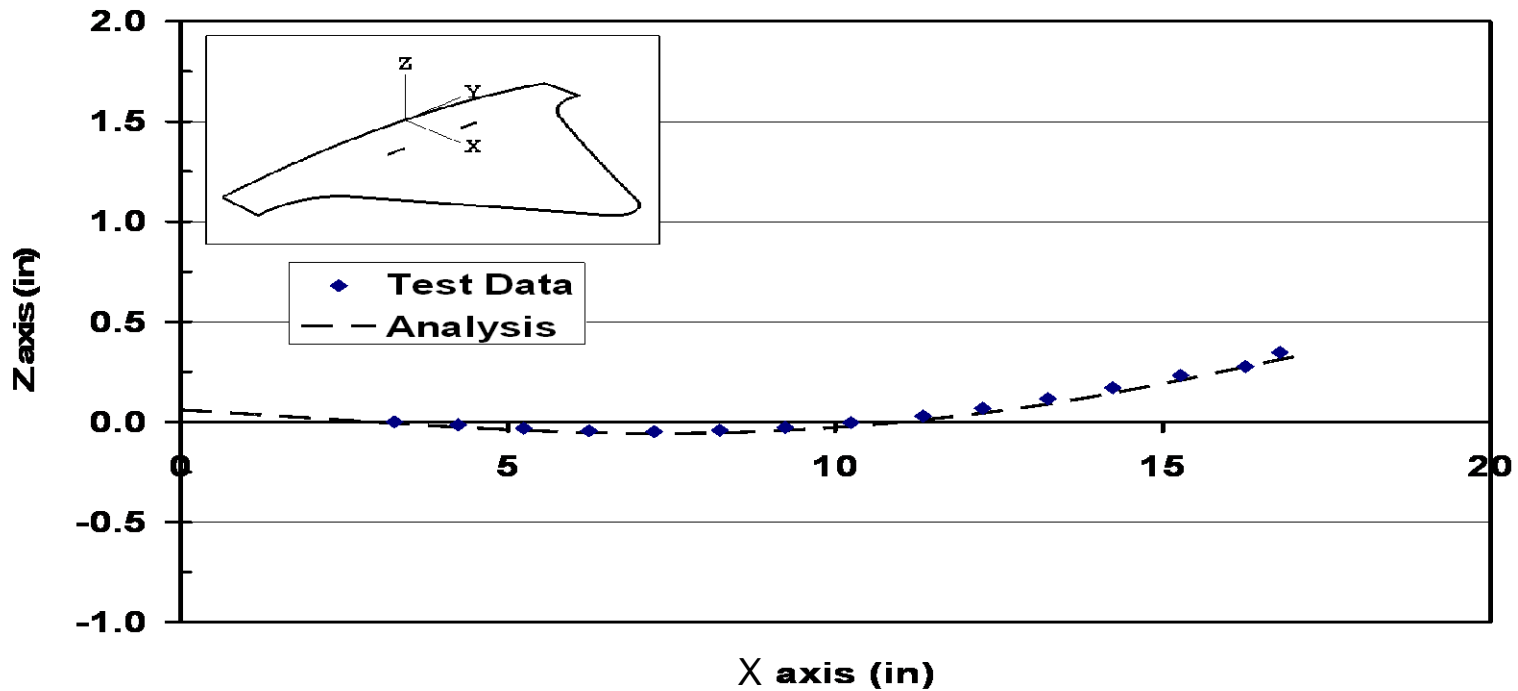


Thermal Mapping of Boeing Chevron

June 22, 2007

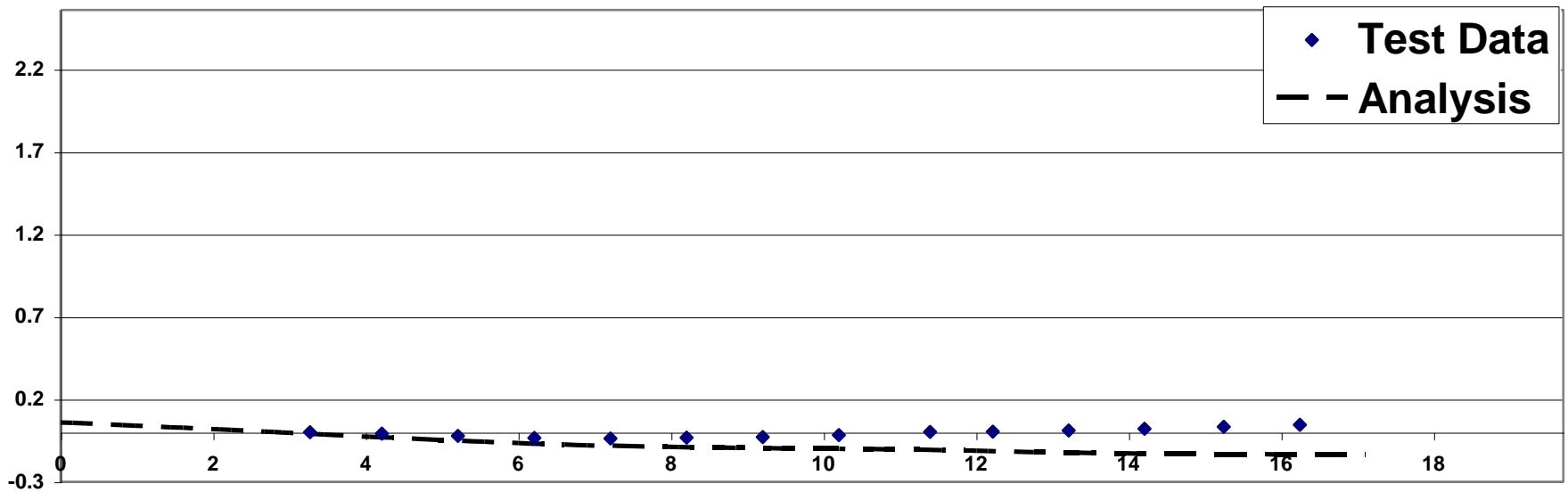
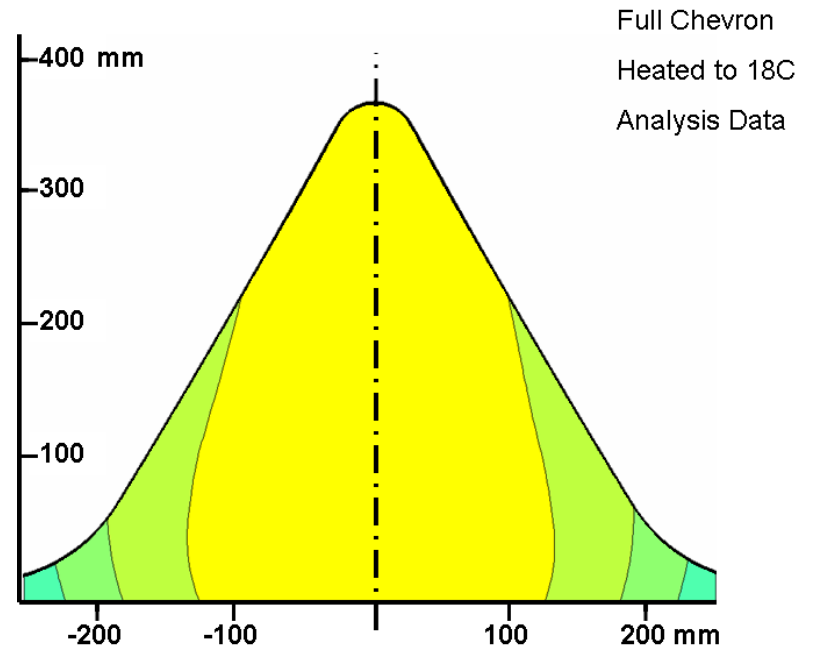
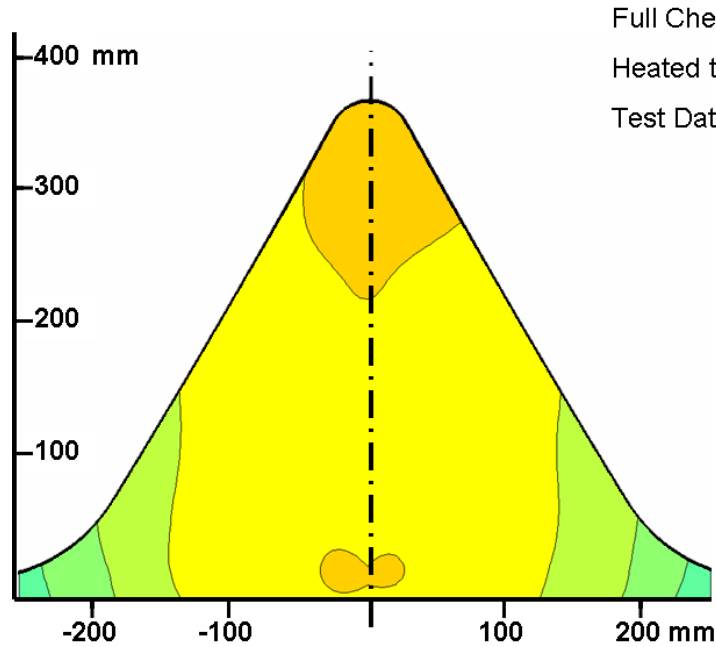
Reference Configuration



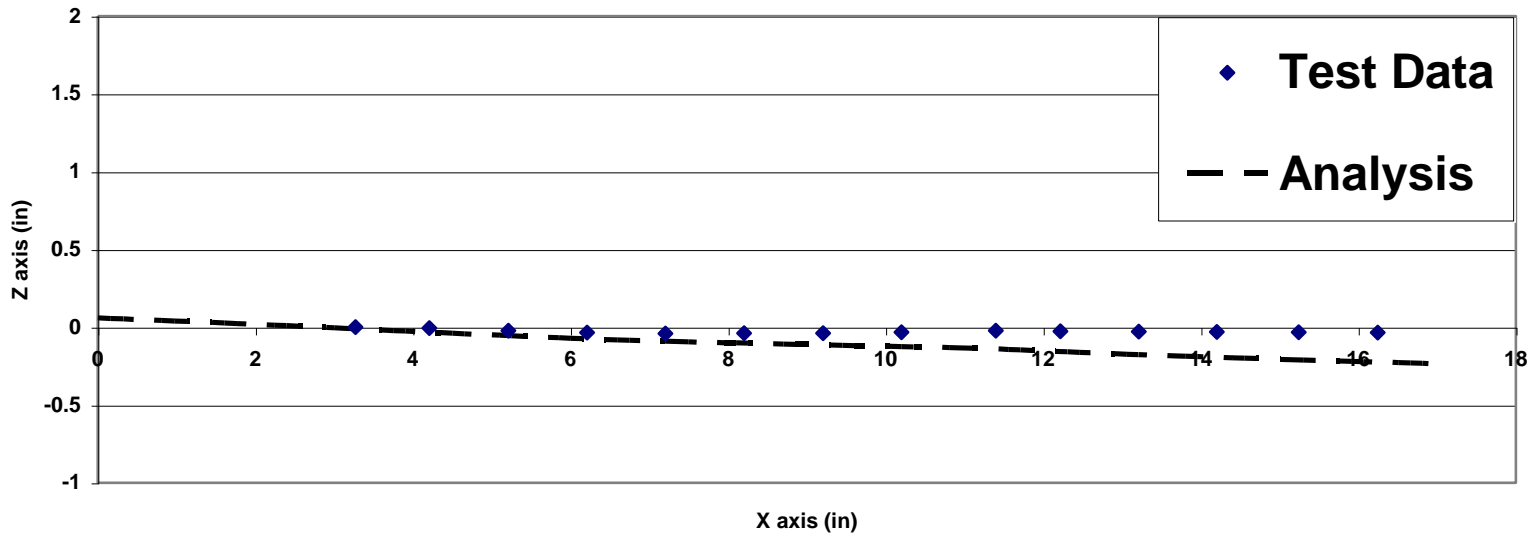
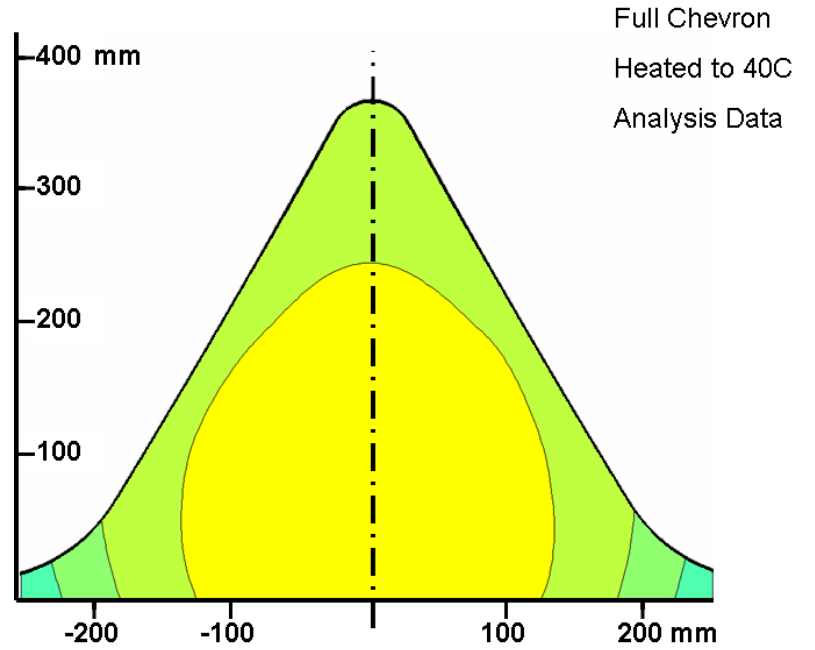
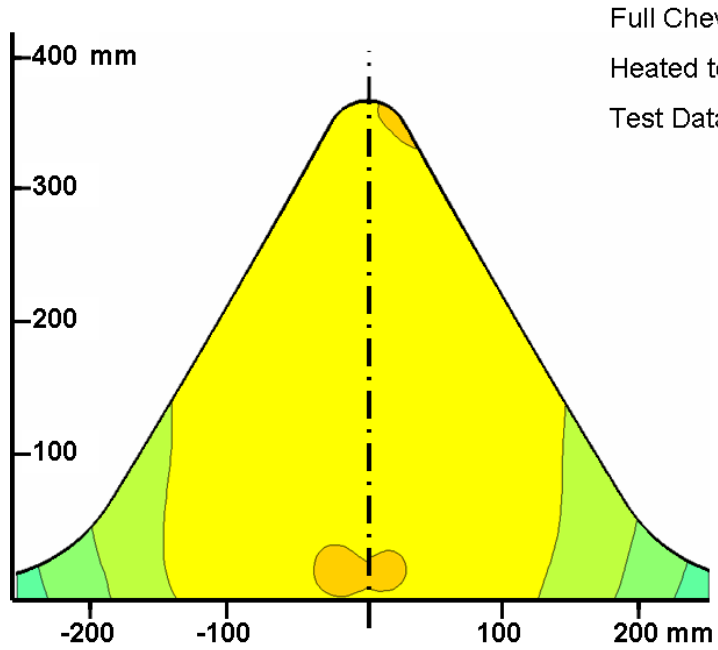
Heating

Beams Clamped in Martensite,
Initial Temperature = 18C

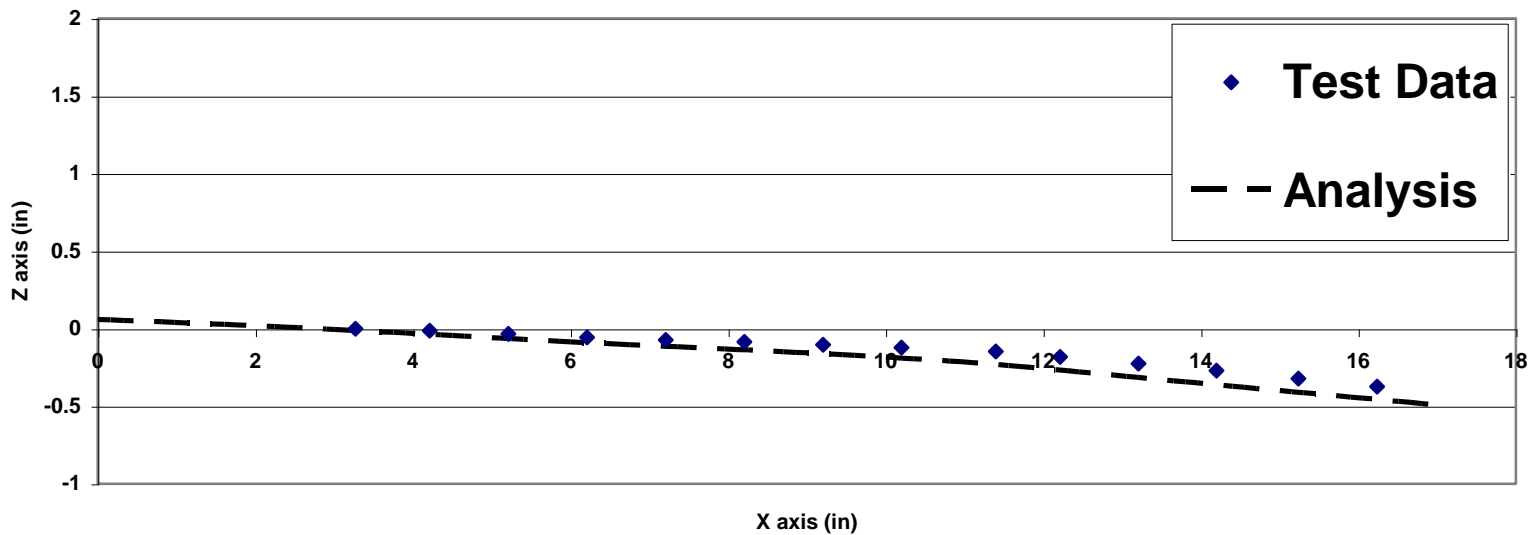
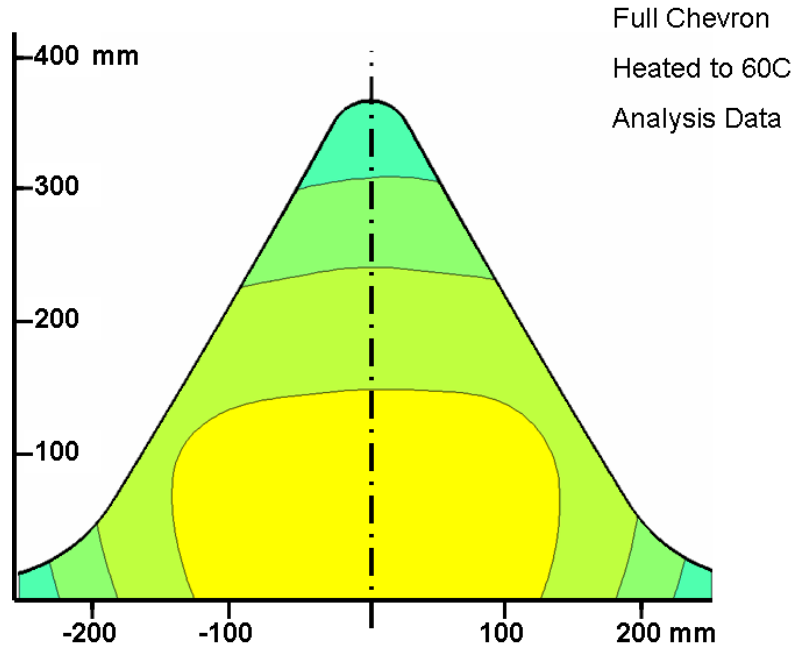
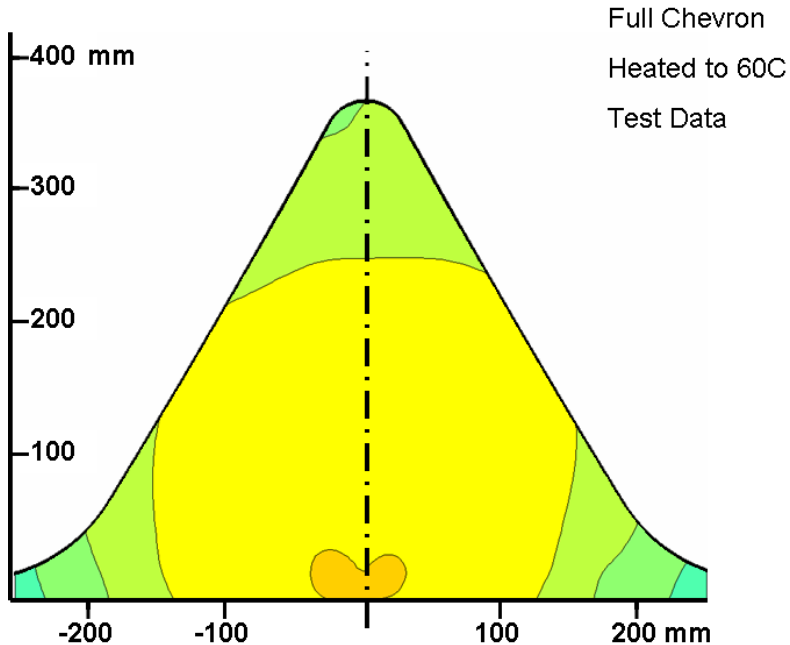
Martensitic Beams Clamped, Temperature = 18C



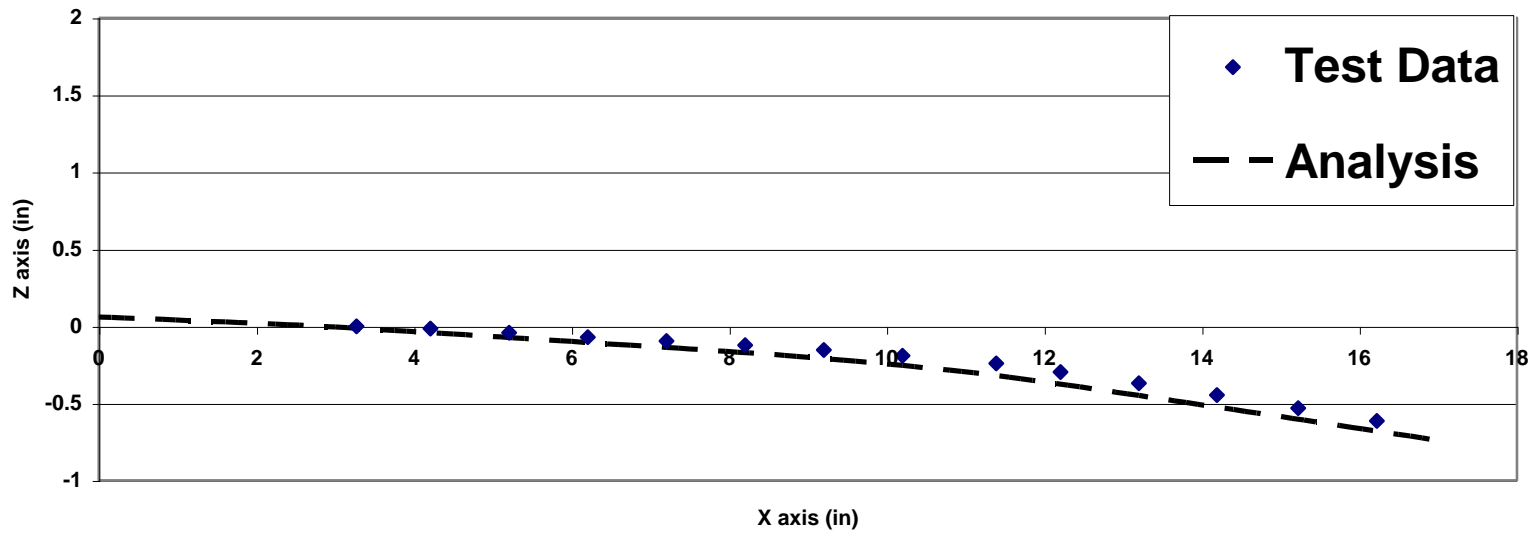
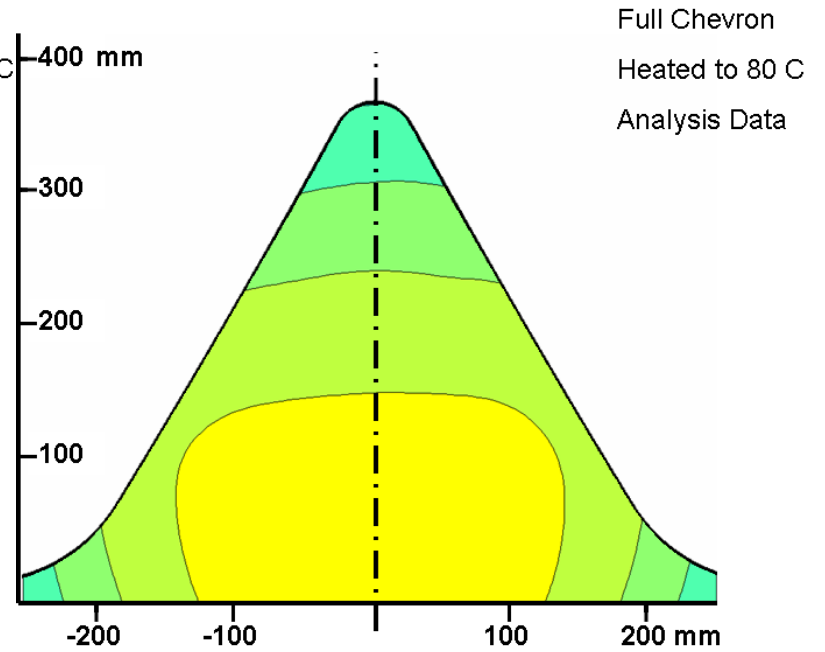
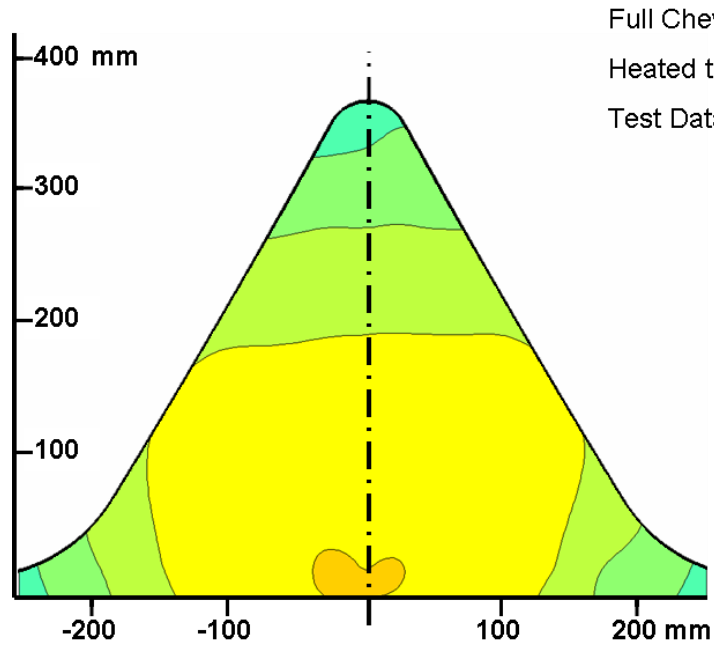
Temperature = 40C



Temperature = 60C



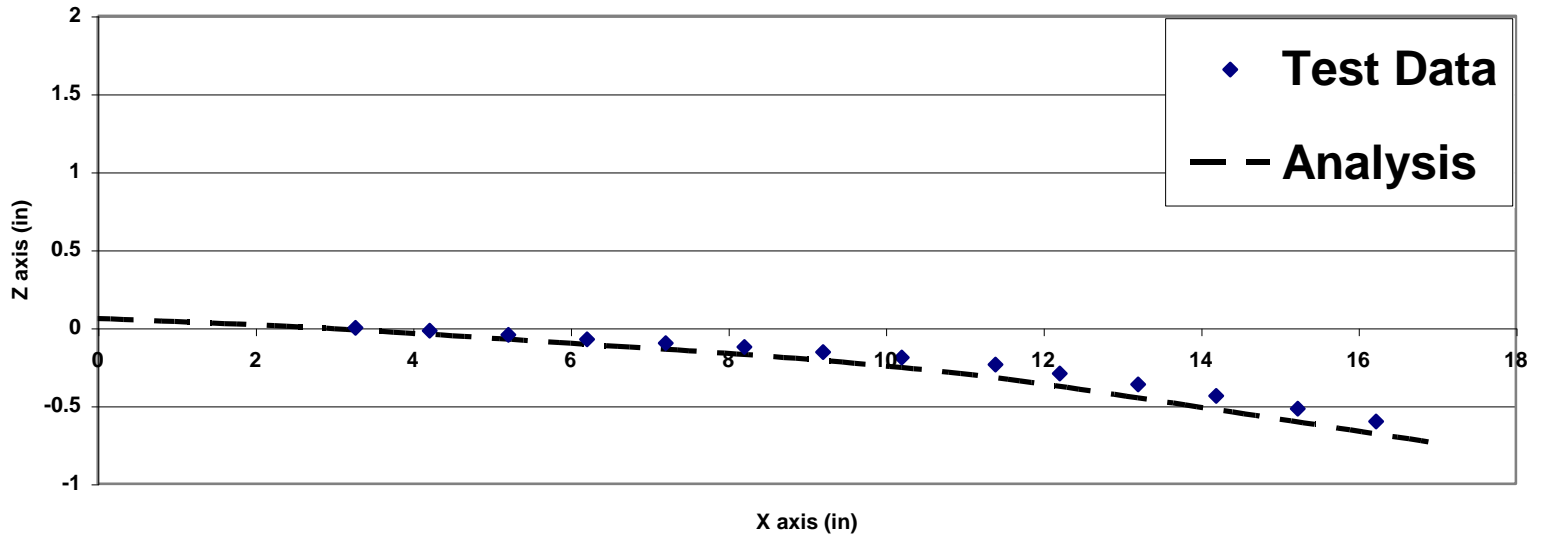
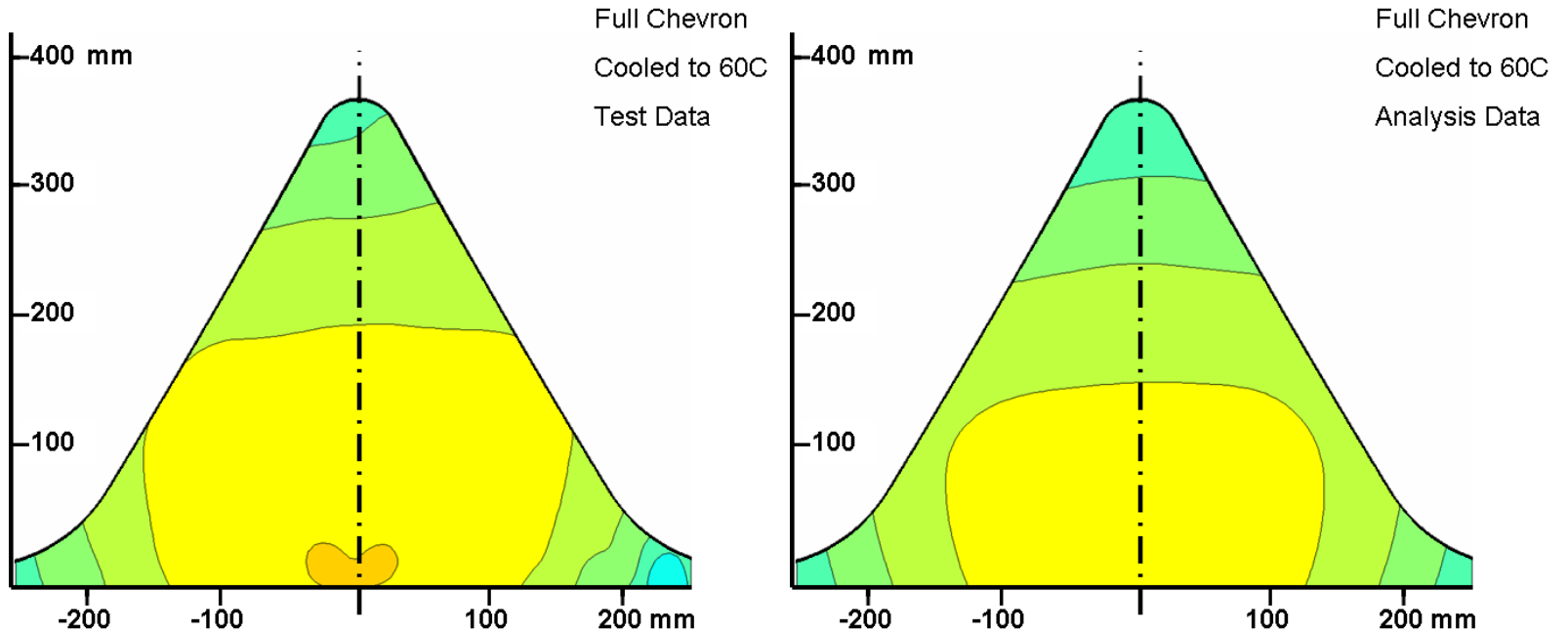
Temperature = 80C



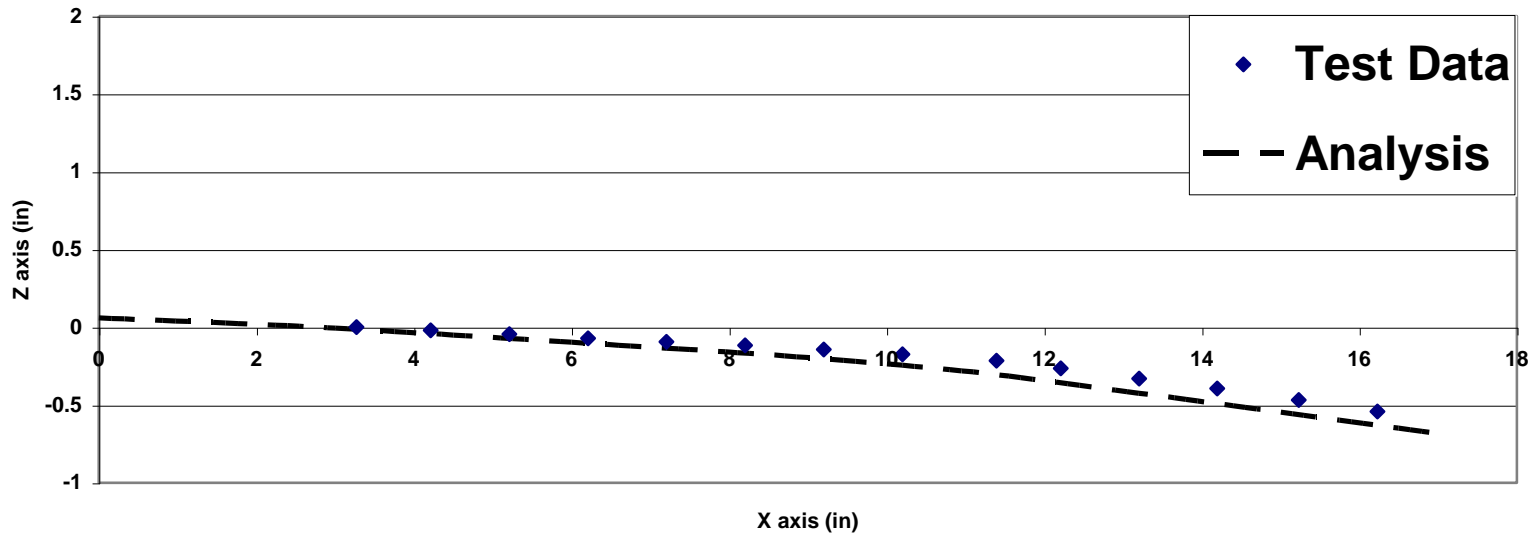
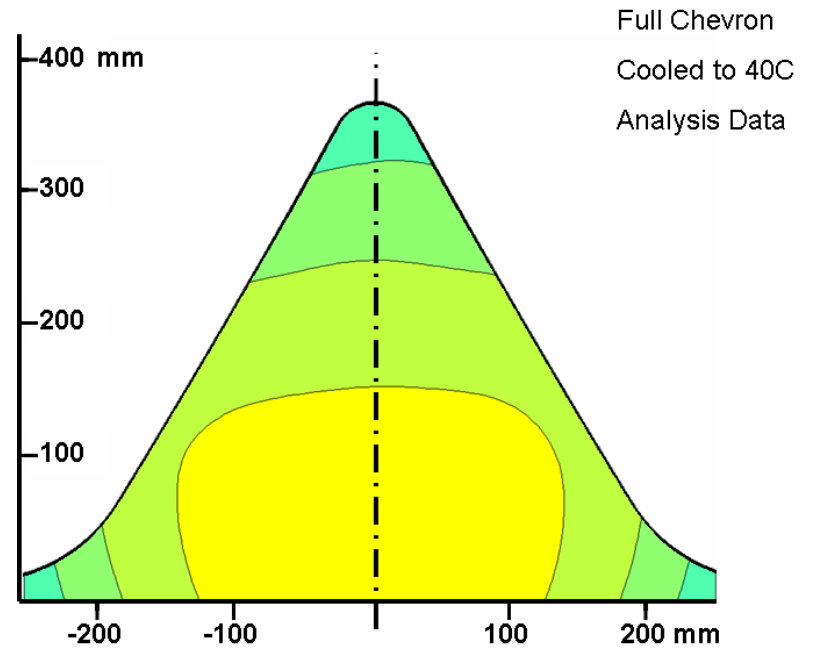
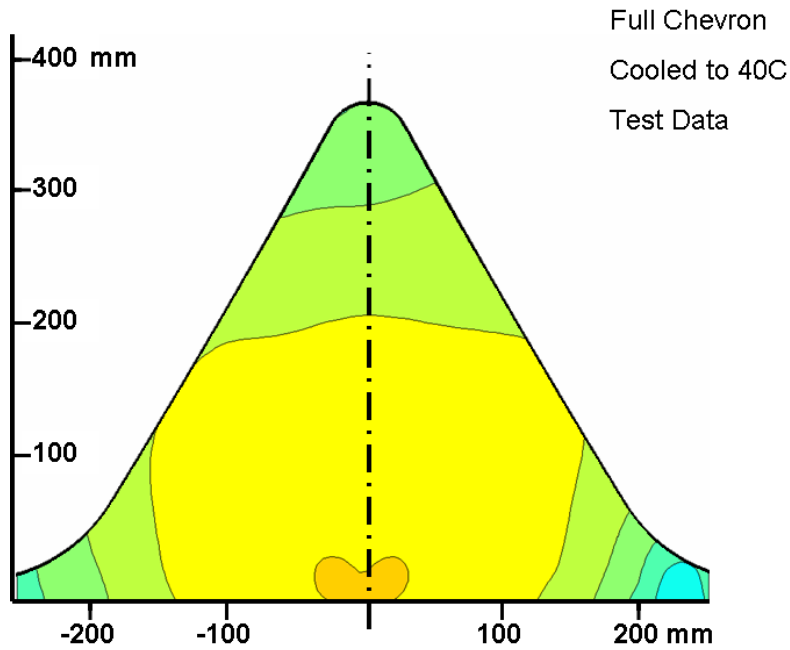
Cooling

Cooled from 80C

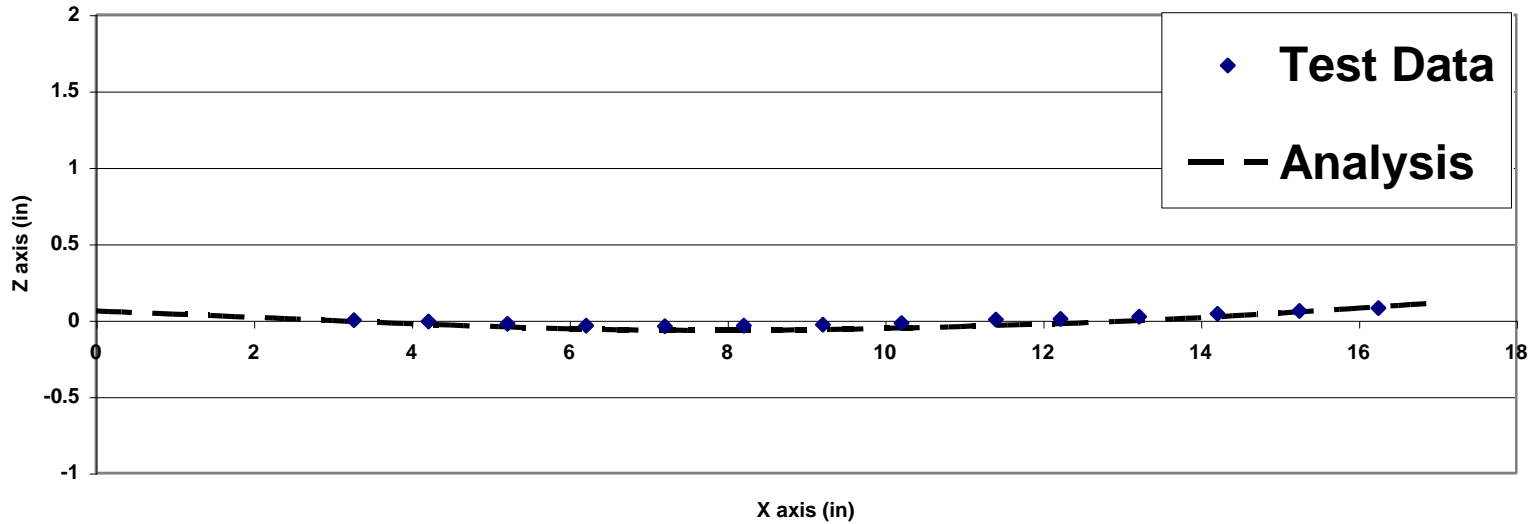
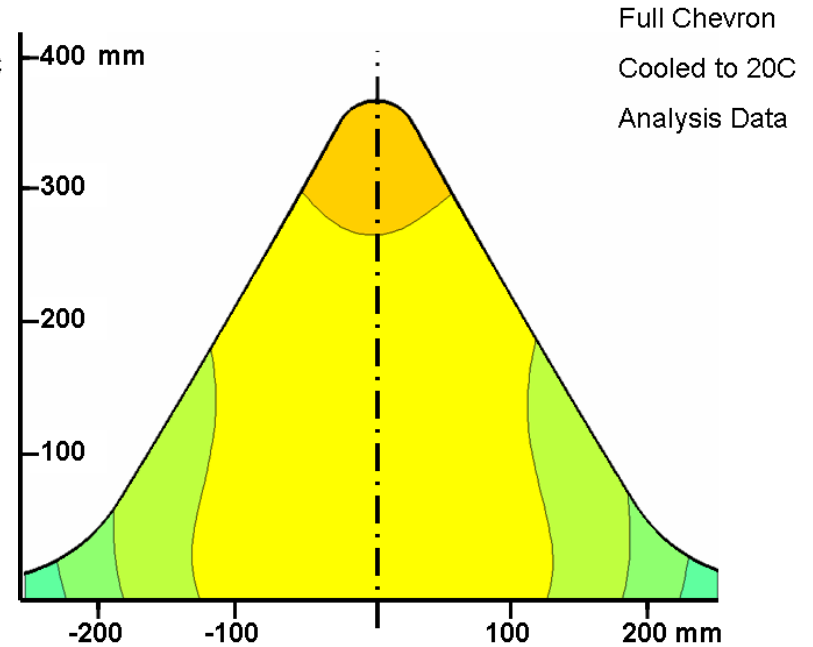
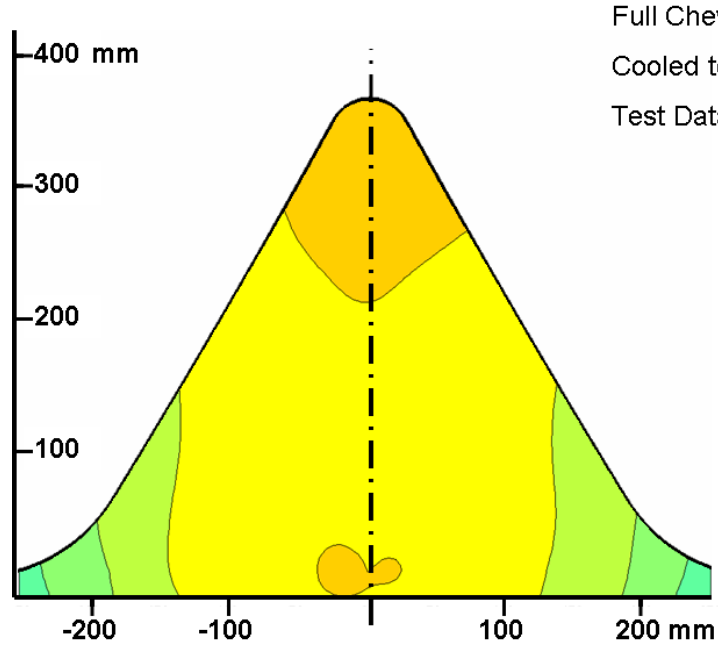
Temperature = 60C



Temperature = 40C



Temperature = 20C



Temperature = 10C

